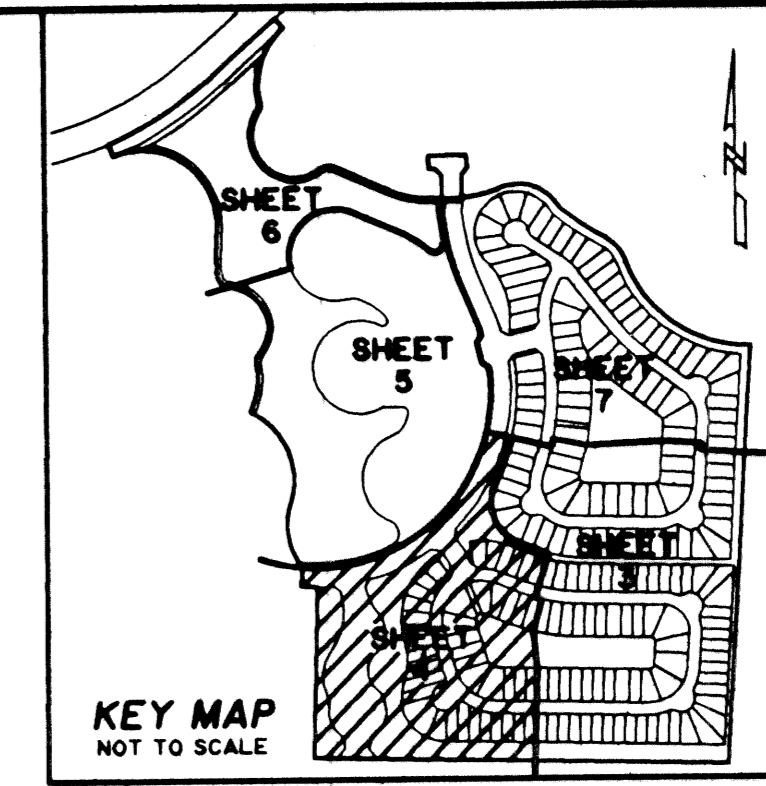


# BAYWINDS R.P.D. PLAT NO. 1

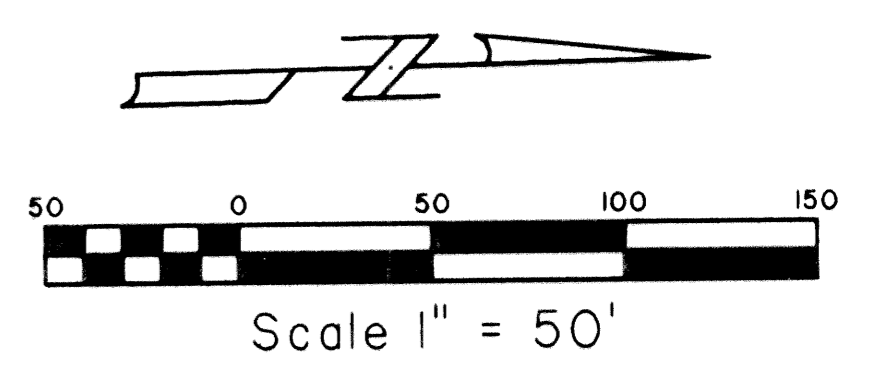
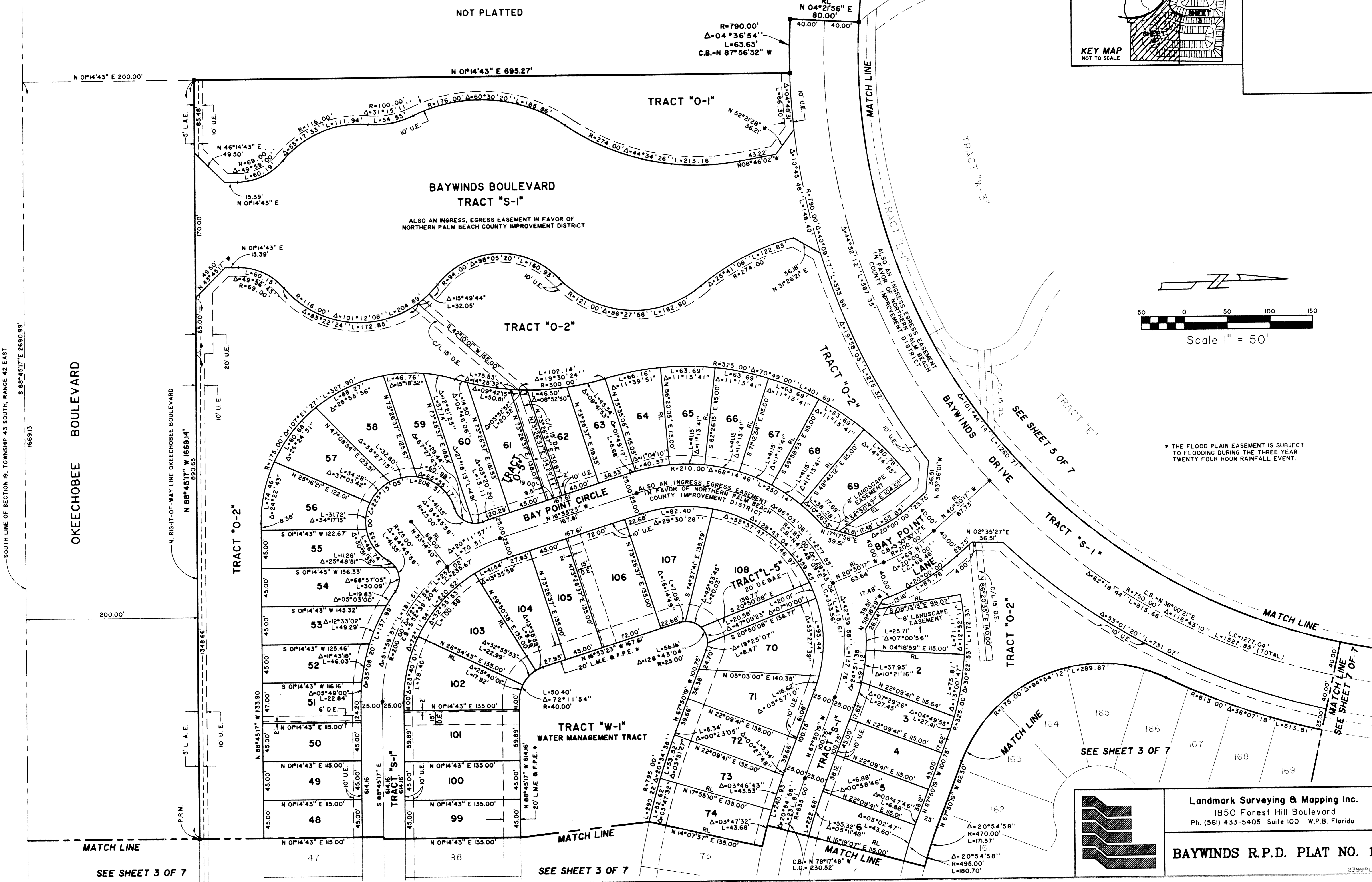
LYING IN SECTION 19, TOWNSHIP 43 SOUTH, RANGE 42 EAST  
CITY OF WEST PALM BEACH, PALM BEACH COUNTY, FLORIDA.  
FEBRUARY, 1999

SHEET 4 OF 7

140



NOT PLATTED



\* THE FLOOD PLAIN EASEMENT IS SUBJECT TO FLOODING DURING THE THREE YEAR TWENTY FOUR HOUR RAINFALL EVENT.

SOUTH LINE OF SECTION 19, TOWNSHIP 43 SOUTH, RANGE 42 EAST  
S 88°45'17" E 2690.99'  
1669.13'

OKEECHOBEE BOULEVARD

N. RIGHT-OF-WAY LINE OKEECHOBEE BOULEVARD  
N 88°45'17" W 1669.14'  
890.63'

TRACT "O-2"

TRACT "O-2"

BAY POINT CIRCLE

TRACT "O-2"

BAYWINDS DRIVE

TRACT "S-1"

TRACT "O-2"

TRACT "W-1"  
WATER MANAGEMENT TRACT

TRACT "L-5"

BAY POINT LANE

TRACT "O-2"

SEE SHEET 3 OF 7

MATCH LINE

SEE SHEET 3 OF 7

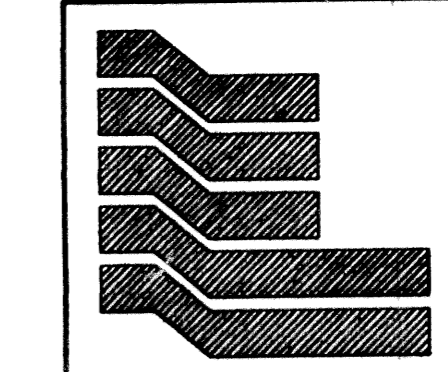
MATCH LINE

SEE SHEET 3 OF 7

MATCH LINE

MATCH LINE

SEE SHEET 7 OF 7



Landmark Surveying & Mapping Inc.  
1850 Forest Hill Boulevard  
Ph. (561) 433-5405 Suite 100 W.P.B. Florida

BAYWINDS R.P.D. PLAT NO. 1

2399PL18